

# WORLD FIRST QUENCH™ SHOWER.

## Take long, hot, guilt-free showers

There is more to showering than simply 'washing'. A lot of time is spent in the shower enjoying the hydrotherapy experience well after the washing process has been completed. The hot flowing water – with its unique splashing sound – is hard to compare with any other therapeutic experience that is 'so readily available' to us all. Quench has been designed to allow responsible showering – saving valuable water and energy during the process.

The Quench Shower is a totally new approach to showering. It is a recirculating shower system that can save enormous amounts of water and energy, in fact up to 82% water and 87% energy when compared to the conventional shower in your home.

Quench is a high-performance, easy to operate, hygienic system that sets the standard well into the future. It is a way you can contribute actively and immediately to substantially reduce water usage and energy in your home, whilst still enjoying the therapeutic experience only a shower can provide.

## We must use less water

No matter what shower you have in your home, Quench has the potential to reduce your water consumption.

**QUENCH ALLOWS YOU TO TAKE A LONG, HOT SHOWER USING ONLY 4 LITRES (1 GALLON) OF WATER.**

## The current facts

A majority of homes have conventional showers that are capable of flowing 20 litres (5 gallons) per minute so, a 7 minute shower could consume as much as 140 litres (37 gallons) of water. That is equivalent to 14 large buckets of water.

If four people in the same home were to take a 7 minute shower, then around 560 litres (148 gallons) of water could be easily consumed each day or 204,400 litres (53,997 gallons) per year.



Q2 model

# TAKE LONG, HOT GUILT-FREE SHOWERS



image courtesy of Allco

## The comparison

### The Quench Shower

A 7 minute Quench Shower experience can consume as little as 25 litres (7 gallons), that is a saving of 115 litres (30 gallons) or a 82% water saving when compared to the conventional shower.

Showering with Quench will encourage you to save enormous amounts of water and energy and make a significant daily contribution to our environment.

- ✓ Saves up to 82% water
- ✓ Saves up to 87% energy
- ✓ Powerful water pressure
- ✓ Recirculating heating system
- ✓ Advanced shower performance
- ✓ Completely hygienic
- ✓ Attractive, modern design
- ✓ Affordable and easy to install
- ✓ Easy to operate

# SAVING WATER. SAVING ENERGY.

## Quench 2-Step showering

Quench 2-Step showering is simply modifying the showering experience in such a way that enormous amounts of water is saved without compromising your showering experience.

### Step 1: Wash your body.

Enter the shower and proceed with washing your body efficiently, soap up, shampoo and rinse off. This could take as little time as 2 minutes and consume as little as 20 litres (5 gallons) of water. During this stage fresh water is being consumed and is being disposed of down the waste in the same way as in a conventional shower.

### Step 2: Enjoy the shower experience!

It is this therapeutic experience that keeps us under the shower for most of the time!

Allow the fresh, clean temperature-controlled shower water falling off your now clean body, to fill the Quench reservoir that is located in the shower base. The reservoir is part of the base moulding and is clearly visible. Once the reservoir is full, turn the shower off so that you are no longer consuming water. Activate the Quench Auto-Mode and pre-heated water will continue

to flow through the Quench Shower system for as long as you desire using as little as 4 litres (1 gallon) of water!

During Auto-Mode the water that is being recirculated is the clean water that is falling from your clean body and captured in the reservoir – the dirty, soapy water used to wash your body has been disposed of and is not being recirculated!

## Saving energy

The Quench Shower incorporates its very own water heating system to ensure efficient, accurate temperature control throughout the Auto-Mode operation.

This unique, efficient heating circuit may save around 87% energy consumption when compared to a conventional shower operation.

*(Refer to – Quench Energy Saving Table on our website).*

## Hygienic operation

The Quench Shower is conveniently sanitized after each and every use.

Following each shower and at the touch of a button:

1. The automatic Sanitize-Rinse cycle is activated
2. Sanitizer is flushed through the entire system
3. A fresh water rinse immediately follows
4. The entire system, including the shower base, is effectively sanitized. All completed in approximately 1 minute. Quench is now in its original hygienic condition ready for the next shower.

## Constant water pressure

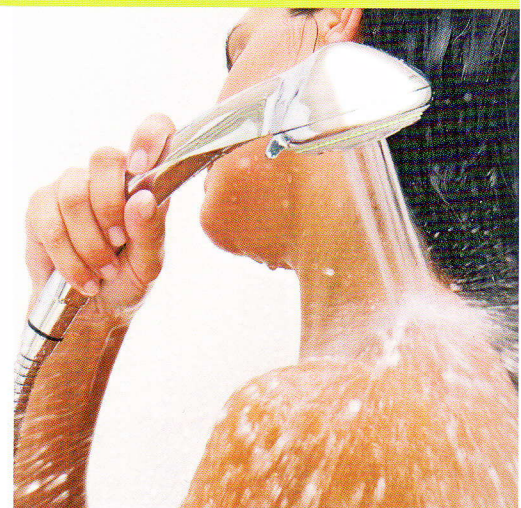
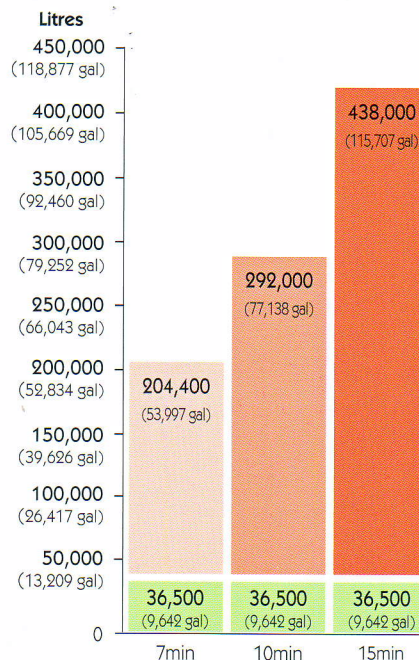
The Quench system is pressurised independently of the existing mains water pressure in your home.

Quench has its own dedicated pressure and flow system to ensure that the performance is constant throughout Quench's Auto-Mode operation.

Quench's performance will not be affected by the operation of another shower or the flush of a toilet.



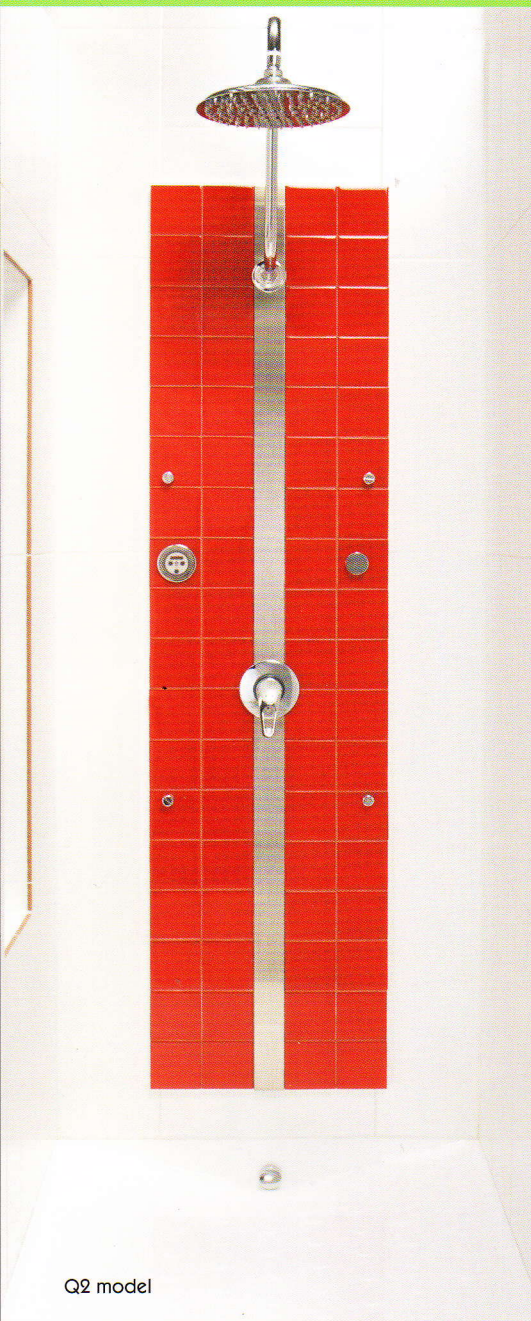
## Annual shower water used in the home



- Quench used in accordance with user guide
- Shower head 20 lpm (5 gpm)

Above comparisons are approximate and based upon 4 persons each taking either a 7-minute, or a 10-minute, or a 15-minute shower per day over a twelve month period.

# SUPERB, AWARD WINNING FUNCTION AND DESIGN OPTIONS



## Design styles

### Q1 Cubicle

The Quench Shower Q1 model is supplied as a complete system including:

- The base, walls, and premium-grade shower fixtures.
- The Quench design enables straight forward uncomplicated installation.
- Only basic plumbing and electrical services are required similar to that of a Whirlpool-bath installation.

### Standard Q1 shower size is:

- 975mm x 975mm (38.5"x38.5").

### Q2 – Design your own

Design your own shower around the unique Quench Operating System.

#### This consists of:

- Shower base and tower that recesses into the shower wall.
- The cover panel comes in a high gloss finish, and if desired may be tiled over to suit your shower decor.

The 'tower' houses all of Quench Q2's operating system and allows access to this equipment for any future servicing requirements.

### Standard Q2 shower base sizes are:

- 900mm x 900mm (35.5"x35.5").
- 1000mm x 1200mm (39.5"x47.5"); and
- A unique Quench Q2 reservoir allows custom shower size construction – couples showers etc

## Design options

A range of options designed to enhance your Quench showering experience are available.

### Q Color

White (standard). Custom colors are available including Black, Gold and Pearl Shimmer as well as a color match service. Fixtures available in chrome or gold finish.

### Q Light

Light up your bathroom and set the mood by selecting the color that relaxes you best. Choose from the cool Blue, Green, Purple, White or Yellow light range.

**Warranty:** 5 year limited warranty. See website for conditions or request the manufacturers warranty statement by calling Quench Solutions Pty Ltd.

Quench Showers® is a trademark of Quench Solutions Pty Ltd. In accordance with our policy of continued improvement, we reserve the right to amend specification without prior notice.

Q2 model

[www.quenchshowers.com](http://www.quenchshowers.com)

Quench Solutions Pty Ltd, PO Box 41, Patterson Lakes, Victoria Australia 3197

T: (03) 9786 7887 [info@quenchshowers.com](mailto:info@quenchshowers.com)

USA enquiries (call HydroCo) T: 1 310 381 0071

**Quench**<sup>TM</sup>  
SHOWERS