

**INSTALLATION GUIDE
MODEL Q1**



Q1 CUBICLE


**⚠ SAVE THESE INSTRUCTIONS – PASS ONTO
OWNER / OPERATOR OF QUENCH**

**NOTE: The manufacturer reserves the right to alter specifications
without prior notice.**

QUENCH SHOWER INSTALLATION GUIDE – MODEL Q1

Manufactured by Quench Solutions Pty Ltd
PO Box 41
Patterson Lakes
Victoria
Australia 3197

Phone: (03) 9786 7887
Email: info@quenchshowers.com
Website: www.quenchshowers.com

 **IMPORTANT:** The following information must be read and understood before commencing the installation of the Quench Shower system. If clarification is required on any issue, please contact the supplier before proceeding with installation.

 **SAVE THESE INSTRUCTIONS – PASS ON TO OWNER / OPERATOR OF QUENCH.**

SYMBOLS




The exclamation point in a triangle signifies an important item. Read the manual concerning the item mark or feature identified.



The lightning flash in a triangle is a warning that hazardous energy is present.




Protective earth terminal is signified by this mark.

 All plumbing and electrical services **MUST** be performed by qualified / licensed personnel in accordance with local and national code / standards.

PREPARATORY

Ensure the Quench Shower system is unpacked carefully and that all components are stored in a clean, safe environment. Check all surfaces to ensure that no damage has occurred during transportation and handling.

Avoid heavy, sharp or abrasive objects from coming into contact with the smooth, gloss surfaces of the shower base and fixtures.

 Refer to the plumbing and electrical preparatory section of this manual to ensure that services are provided prior to commencement of installation. **See floor plan drawing – Q1.**

- Check the **HOT** and **COLD** water supply lines are located in the correct position.
- Check the trapped waste (drain) line is located in the correct position and that allowance is made to gain access beneath the shower base to connect the waste once set in position.



Check the dedicated **ELECTRICAL** supply line is protected via an Earth Leakage Circuit Breaker (ELCB) and is located in the correct position.

SHOWER ASSEMBLY

The Q1 Quench Shower cubicle is supplied with the moulded base and walls separated so that the system can be easily transported and carried through hallways / doorways to the final location. The base and walls are to be aligned and joined together using the silicon sealant and fasteners provided. **See assembly drawing.**

1. Ensure all packaging material has been removed from the surfaces which are to be joined and ensure the surfaces are clean and free from grease, oil and grime. If required use soapy water and a clean cloth to remove – wipe surfaces dry with clean cloth.
2. Using the silicon sealant provided run a continuous bead along the entire joining surface of the base from end to end. Circle the silicon bead around each screw hole.



IMPORTANT: Ensure the silicon bead is thorough as this is the water seal between the base and walls. If the seal is not thorough then water leaks may occur during use of the shower. Make certain the two surfaces are joined efficiently before the silicon sealant skins and begins to cure.

3. Promptly and carefully locate the wall moulding down onto the base moulding without smearing the silicon away from the surfaces which are to be joined. Using the screws provided fix the mouldings together - align the mouldings and tighten screws firmly. Do not over tighten.
4. Using a soft dry clean cloth, carefully and thoroughly wipe away the excess silicon which has squeezed from the joint. It is important this is wiped away whilst the silicon is un-cured.
5. The plumber is to make connection of plumbing components – refer to plumbing connection section in this guide.



IMPORTANT: Take care and connect fittings properly to avoid leaks during shower use.

INSTALLATION

1. **Trial fit** - Locate the shower cubicle in place up against the wall / constructed framework.
2. Ensure the waste (drain) in the shower base is located directly over the trapped waste (drain) and make certain that access is allowed to connect the drain when the shower is finally located.
3. Check the hot and cold water supply lines to the shower are in the correct location on the left hand side wall of the framework and the connection to the shower system can be made when the cubicle is finally located.
4. Check the electrical outlet is located on the right hand side wall of the framework and the connection to the shower system can be made when the cubicle is finally located.

5. Whilst the cubicle is sitting in place, mark the underside of the top flange of the shower cubicle walls. This will enable the placement of the top flange onto the constructed frame work when finally located. The shower wall top flange must be secured and sealed to avoid leaks from shower splash during operation.
6. Mark the cubicles side flanges and ensure that the constructed frame work is located behind the flanges. This will enable the fixing of the cubicle flanges when the shower cubicle is finally located.
7. Ensure the cubicle sits flat and level to floor and walls. Make sure it is vertical and plumb. It may be required to pre-fit battens or install packing to align the flanges to the wall cladding. Any uneven spots on the flanges should be sanded using a course sanding disk.
8. Drill fixing screw holes approximately 300mm centres down each side flange starting 130mm from the bottom and approximately 15mm in from the outside edge of the flange. Fixing screw holes should be slightly oversize to prevent cracking of the flange when fixing.



IMPORTANT: To avoid damage to surfaces, drill from the smooth gelcoat surface **ONLY**. Use a slow speed drill with light pressure applied. Masking tape may be applied to the gelcoat surface prior to drilling as this may prevent excess chipping of gelcoat. When final fixing is made, use water resistant screws with a small head. The shower screen frame or glass panels when fitted after cubical installation will need to cover the screw heads for aesthetic purposes. Ensure consideration is given to the covering of these fixing screws.

9. Remove the shower cubicle and fit the pop-up waste provided to the base moulding. Apply a thin bead of silicon sealant to the waste flange so a silicon seal is made when located against the base moulding. The rubber gasket locates on the underside of the base **NOT** inside the shower base. Tighten firmly by hand. Use a clean dry soft cloth to remove excess silicon.
10. Lay a moisture barrier (plastic sheet) on floor to overlap intended shower base installation area – this will prevent moisture from the support bed being absorbed into flooring.
11. Spread a stiff mortar mix (suggest 4:1 sand and cement with wetting agent) over complete area to be occupied by shower base and the pump box (sump).

NOTE: ensure the pump box (sump) which is a moulded part of the shower base is also supported by mortar mix bed. This will also provide insulation / noise reduction during pump operation.

It is also recommended expanding foam be used to surround the pump box – externally, do not apply foam to the pump or fittings located in the pump box. Foam will provide additional noise reduction during pump operation.

12. Locate the shower cubicle in place and push down into mortar pad until level in all directions. Ensure the shower base gelcoat surface is protected against surface damage, scratching etc. During this procedure use a soft cloth sheet or similar and make certain there is no sand or grit between the sheet and the gelcoat surface. To avoid structural damage and ensure reliable water run-off, it is important the base is adequately supported and therefore where the base support instructions cannot be adhered to then an appropriate, alternative support method must be provided.



IMPORTANT: Before proceeding, check the water run off from shower base to waste outlet (drain) is satisfactory. It is recommended the shower base is not stood on, or excessive weight is applied during the curing of the mortar pad as this may create an air gap between the base and mortar pad once cured.

13. Secure the shower cubicle in place by fixing the side flanges of the walls and the top flange to the construction framework. **Refer to above instructions.**
14. To avoid water leakage as a result of shower splash during use, use an appropriate flexible sealant to seal the cubicle wall top flange to the constructed wall surface. **See assembly drawing – top flange location.**



VENTILATION: Ensure the cavity / construction frame work the cubicle secures against is not air-tight – the water pump requires ventilation.

LOCATING THE SANITIZING RINSE CONTROL BUTTON

An air-button control is supplied with the Quench shower system. This air-button is to be located external of the shower cubicle and is convenient to press when exiting the shower. This air-button activates the automatic sanitizing rinse cycle once the bather has finished a shower session. Simply drill the surface to which the button is to be mounted eg; wall or hob. The plastic air switch tube which is connected to the electrical termination box must be routed through to the air-button control location, connect the tube to the button and attach the button to the mounting surface using silicon sealant.

PLUMBING CONNECTION



IMPORTANT: All plumbing services **MUST** be performed by qualified / licensed personnel in accordance with local and national code / standards.

1. Remove the equipment access panel by unscrewing the six fasteners. Be careful removing the panel as it will be attached to flexible plumbing. Do not disconnect this plumbing, simply rest the panel against the shower wall during the main plumbing connection procedure. Avoid pulling on the panel and in-turn the plumbing connections.
- 2a. Connect the Quench water pump which is located in the pump box (sump) to the plumbing which is attached to the cubicle walls behind the equipment panel. **See Figure 1.** Ensure the pipe has the silver thimble located in the end of pipe. The grey plastic pipe **MUST** be pushed firmly down into the grey female union that is fitted to the pump outlet. **DO NOT** un-screw and remove the grey female union – simply un-screw it two turns and push the pipe down firmly into the union. It should push in approximately 25mm – then re-tighten the union by hand.
- 2b. Connect the flexible fresh water flush hose from the rinse solenoid valve located on the cold water inlet circuit to the water pump suction manifold which is located in the pump box (sump). **See Figure 2.**
- 2c. Connect the plastic bleed tube from the shower mixer take off plumbing to the water pump suction manifold which is located in the pump box (sump). **See Figure 3.**
- 2d. Connect the plastic sanitizer tube from the sanitizer container solenoid valve to the water pump suction manifold which is located in the pump box (sump). **See Figure 4.**
3. Connect 15mm ($\frac{1}{2}$ inch) hot and cold main water supply lines to the Quench plumbing. Flexible hose connections are recommended. 350-950 kpa (50 – 100psi) **MAX.** **See Figure 5.**
4. Connect 40mm (1 $\frac{1}{2}$ inch) waste (drain line) to shower base. The pop-up waste (drain) is supplied.



ELECTRICAL CONNECTION



IMPORTANT: All electrical services **MUST** be performed by qualified / licensed personnel in accordance with local and national electrical code / standards.

The Quench shower is offered as a **STANDARD** specification and a **BOOST** option.

STANDARD SPECIFICATION

The **Standard Specification** Quench shower system incorporates a water recirculating pump 540 WATTS @ 230 Volts and a heating element 4080 WATTS @ 230 Volts. The heating element is designed to maintain water temperature which is being recirculated and therefore operates as required – typically the heater pulses on / off during the Quench auto-mode (recirculation) to raise the water temperature by only a few degrees. Frequency of pulsing is relevant to the selected shower temperature set at the control panel.

1. Terminate the 220/240 Volt, 50Hz, 20 Amp, single phase dedicated electrical supply in the electrical termination box provided. The electrical termination box is located behind the equipment panel. Ensure the box lid is replaced and secured to provide seal.

BOOST SPECIFICATION - OPTIONAL

The **Boost Specification** Quench shower system incorporates a water recirculating pump 885 WATTS @ 230 Volts and a heating element 6120 WATTS @ 230 Volts. The heating element is designed to maintain water temperature which is being recirculated and therefore operates as required – typically the heater pulses on / off during the Quench auto-mode (recirculation) to raise the water temperature by only a few degrees. Frequency of pulsing is relevant to the selected shower temperature set at the control panel.

1. Terminate the 220/240 Volt, 50Hz, 30 Amp, single phase dedicated electrical supply in the electrical termination box provided. The electrical termination box is located behind the equipment panel. Ensure the box lid is replaced and secured to provide seal.



IMPORTANT: The dedicated electrical supply line **MUST** be protected by an ELCB (Earth Leakage Circuit Breaker) with a maximum trip current of thirty milliamps.



FUSES: Circuit protection is provided by internal fuses which are intended to be serviced by authorized personnel only. Fuse locations are as follows (all fuses are contained in electrical termination box). Replace only with fuse of same type rated as marked.

TESTING

Once electrical and plumbing connections have been made it is important to test the Quench shower system.

1. First ensure the shower surfaces are clean from grit and debris.
2. Ensure the cloth strainer is located over suction fitting and is clean.
3. Fill the sanitizer container through the sanitizer fill cap located on equipment access panel, rotate the cap and remove. Fill only with undiluted Q-San solution – five litre capacity.
4. Connect electrical supply to the Quench shower.
5. Connect hot and cold water supply to the Quench shower.

6. The equipment access panel may be loosely located in place.
7. With the pop-up waste in the open position (waste is in up position) operate the shower in normal shower mode by manually lifting the lever on the shower mixer, allow the water to flow through the shower head and adjust water temperature. Allow shower to operate in normal shower mode long enough to visually inspect all plumbing for leaks.

NOTE: When the shower is activated in normal mode by lifting the shower mixer, water will flow from the suction for approximately fifteen seconds before the suction valve automatically closes and directs all the shower water through the shower head. The suction is located in the reservoir. The water flowing from the suction will shut off sooner if the water temperature flowing through the system reaches 33 Celsius.

8. Whilst the shower is still operating and water temperature is approximately 38 Celsius, close the waste by pushing down on it. Allow the reservoir to fill with water then turn shower off by pushing down on the shower mixer.
9. Immediately press the on / off button on the control panel to activate the Quench auto-mode (recirculation) – water from the reservoir will now be pumped through the shower head. The heater can be adjusted at the control panel, set the maximum temperature by pressing the up arrow. Allow auto-mode to operate for approximately five minutes – a five minute timer is incorporated in the systems software. Press the on / off button several times throughout operation to stop and start the auto-mode. Visually inspect all plumbing for leaks.

NOTE: If a time delay of more than three minutes is allowed from when the auto-mode stops operating (system is turned off), then normal shower mode will have to be operated for at least five seconds, then turned off before the Quench auto-mode can be re-started.

10. Following the testing procedure simply drain the reservoir by opening the pop-up waste.
11. Activate the sanitizing rinse cycle by pressing the air-button that is mounted external of the shower cubicle. Once pressed, water will flow from the shower head for a few seconds. Sanitizing solution will then automatically be injected into the systems plumbing circuit. The system will then automatically drain, after a sixty second time delay.

NOTE: If any leaks are identified or suspected malfunction of the system occurs, disconnect the water and electrical supply to the system and immediately contact the supplier or the manufacturer to arrange service.

SHOWER SCREEN

Contact local shower screen supplier to measure and quote, supply and fit shower screen of your choice.

Figure 1.



Figure 2.



Figure 3.



Figure 4.

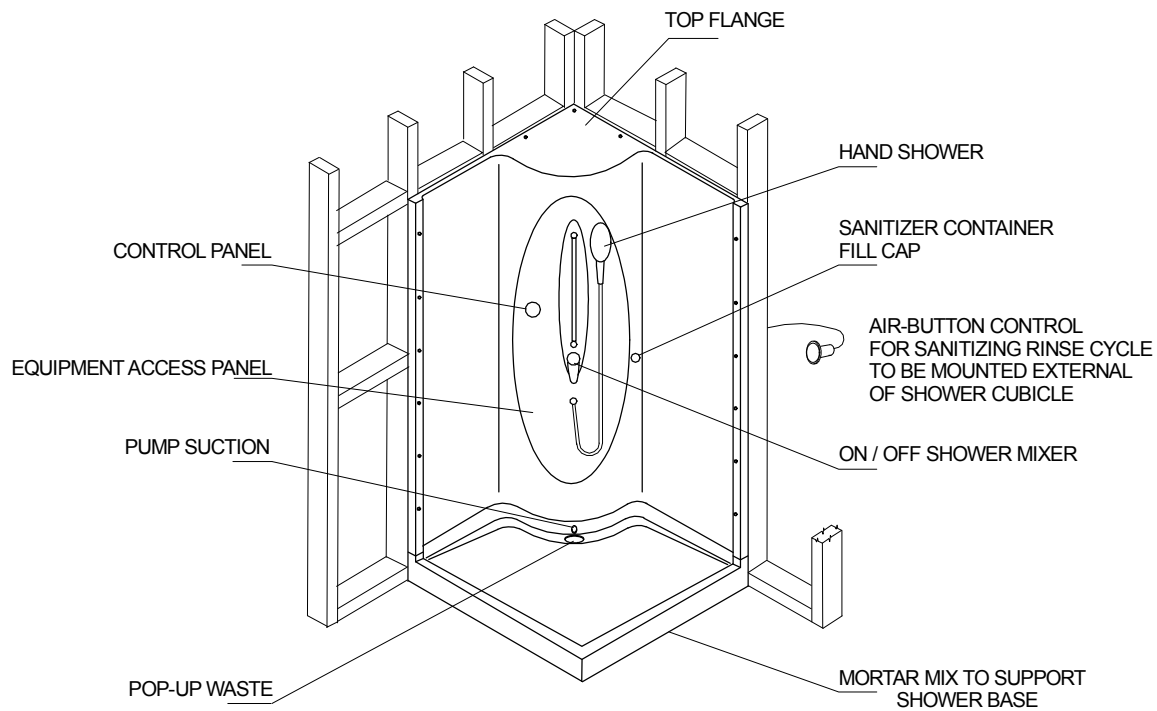


Figure 5.



**Cold Water
Supply**

**Hot Water
Supply**



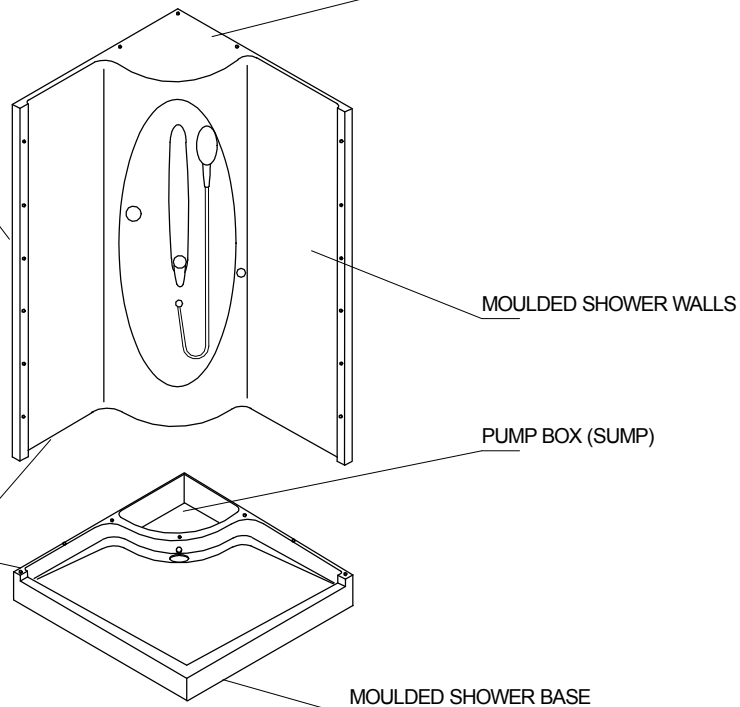
NOTE: SIDE FLANGES TO BE FIXED TO CONSTRUCTION FRAME WORK USING FASTENERS FIX AT APPROX 300mm CENTRES

NOTE: SCREW HEADS TO BE FLUSH WITH FLANGE FACE AND COVERED BY SHOWER SCREEN FRAME WHEN FITTED

NOTE: WALL TOP FLANGE IS TO BE FIXED AND SEALED TO CONSTRUCTION FRAME WORK TO PREVENT LEAKS FROM SHOWER SPLASH

NOTE: MOULDED WALLS AND SHOWER BASE TO BE JOINED WITH SILICON SEALANT PROVIDED. USE THE FASTENERS PROVIDED TO FIX SHOWER WALLS TO SHOWER BASE

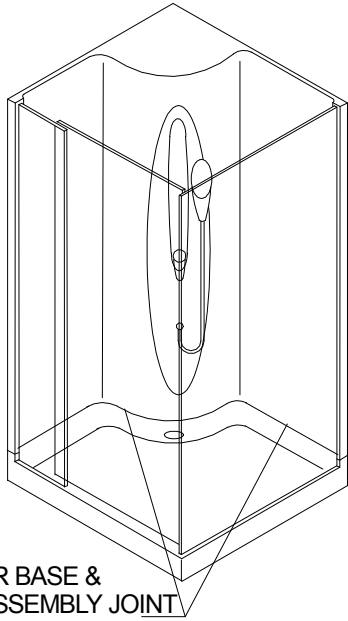
NOTE: A CONTINUOUS BEAD OF SILICON MUST BE APPLIED TO ENTIRE JOINING SURFACES TO PREVENT LEAKAGE



Q1 - QUENCH SHOWER CUBICLE INSTALLATION GUIDE ASSEMBLY DRAWING

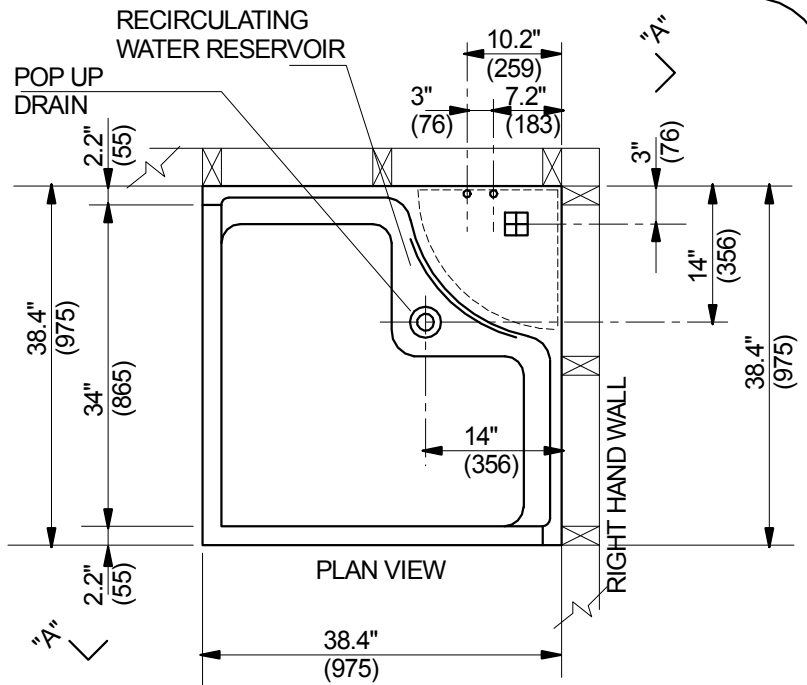
SEAFORD VICTORIA AUSTRALIA

ph: (03)9786 7887 www.quenchshowers.com

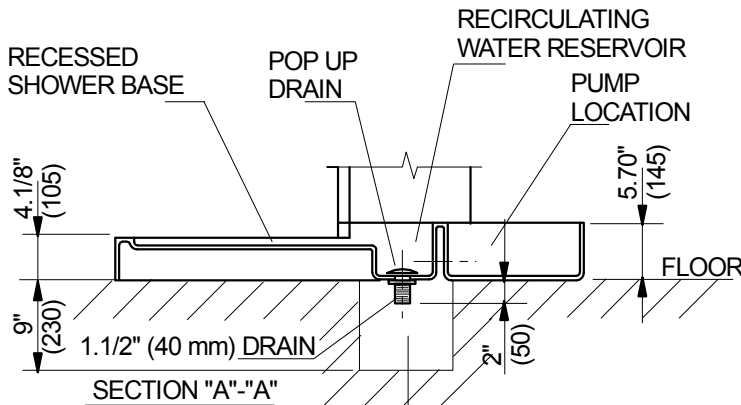


SHOWER BASE & WALL ASSEMBLY JOINT

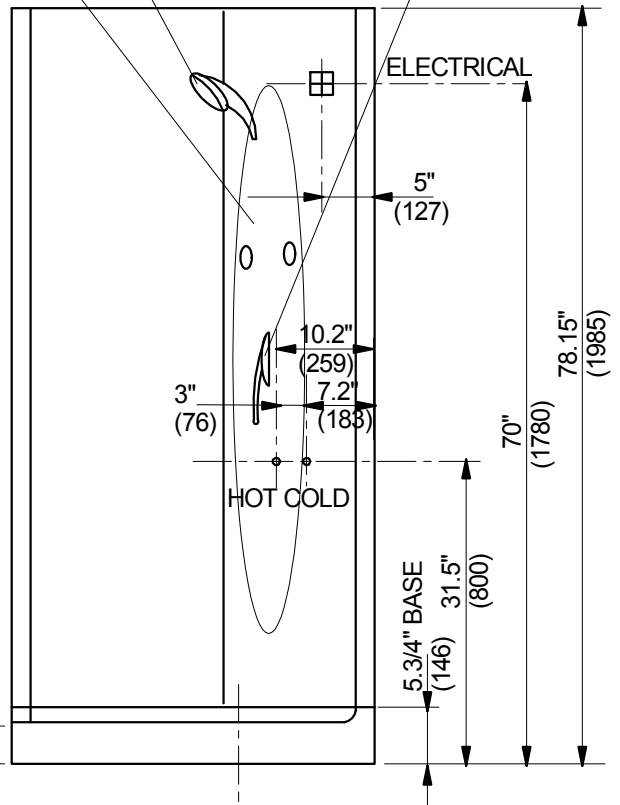
TYPICAL SCREEN STYLE (SCREEN NOT SUPPLIED)



REMOVABLE ACCESS PANEL SHOWER HEAD ON/OFF MIXER



SECTION "A"- "A"



IMPORTANT:

ALLOW ACCESS TO CONNECT DRAIN / TRAP APPROX 230mm(9") BELOW FLOOR LEVEL. LESS IF LOW PROFILE TRAP IS USED. YOUR ARM MUST BE ABLE TO REACH UNDER SHOWER BASE TO THE DRAIN OUTLET TO ENABLE CONNECTION TO THE DRAIN.

SERVICES:

◆ 1/2"(15) HOT & COLD WATER CONNECTIONS 350-950 kpa (50-100PSI) MAX ON LEFT HAND WALL

○ DRAIN CONNECTION 40mm (1.1/2") TRAPPED DRAIN REQUIRED

STANDARD SPECIFICATION:

⊞ ELECTRICAL 220/240 Volt 50/60 Hz 20 amp DEDICATED LINE PROTECTED BY EARTH LEAKAGE CIRCUIT BREAKER WITH MAX TRIP RATING OF 30 Milliamp (CLASS "A" GFC1) ELECTRICAL CONNECTION TO BE ON RIGHT HAND WALL

BOOST SPECIFICATION: OPTION

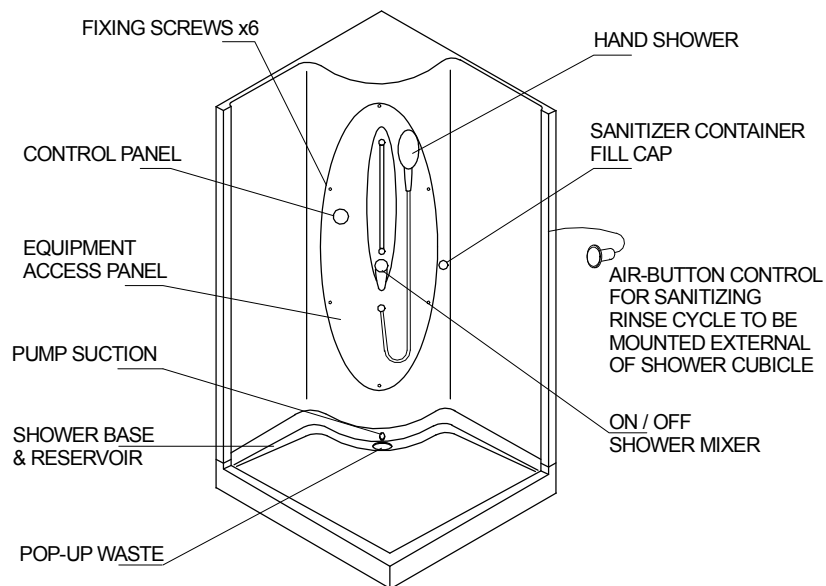
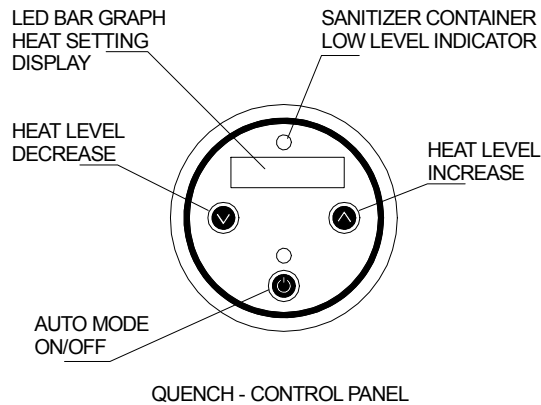
220 / 240Volt. 50 / 60Hz. 30Amp DEDICATED LINE AS PER ABOVE.

QUENCH SHOWER FLOOR PLAN MODEL - Q1

SEAFORD VICTORIA AUSTRALIA

ph: (03)9786 7887 www.quenchshowers.com

ALL DIMENSIONS SHOWN ARE INCHES & MILLIMETRES



NOTE: SHOWER FIXTURES
MAY VARY ACCORDING TO
CUSTOMER REQUIREMENT

Q1 - CONTROL PANEL - INSTALLATION GUIDE QUENCH SHOWER

SEAFORD VICTORIA AUSTRALIA

ph: (03)9786 7887 www.quenchshowers.com