

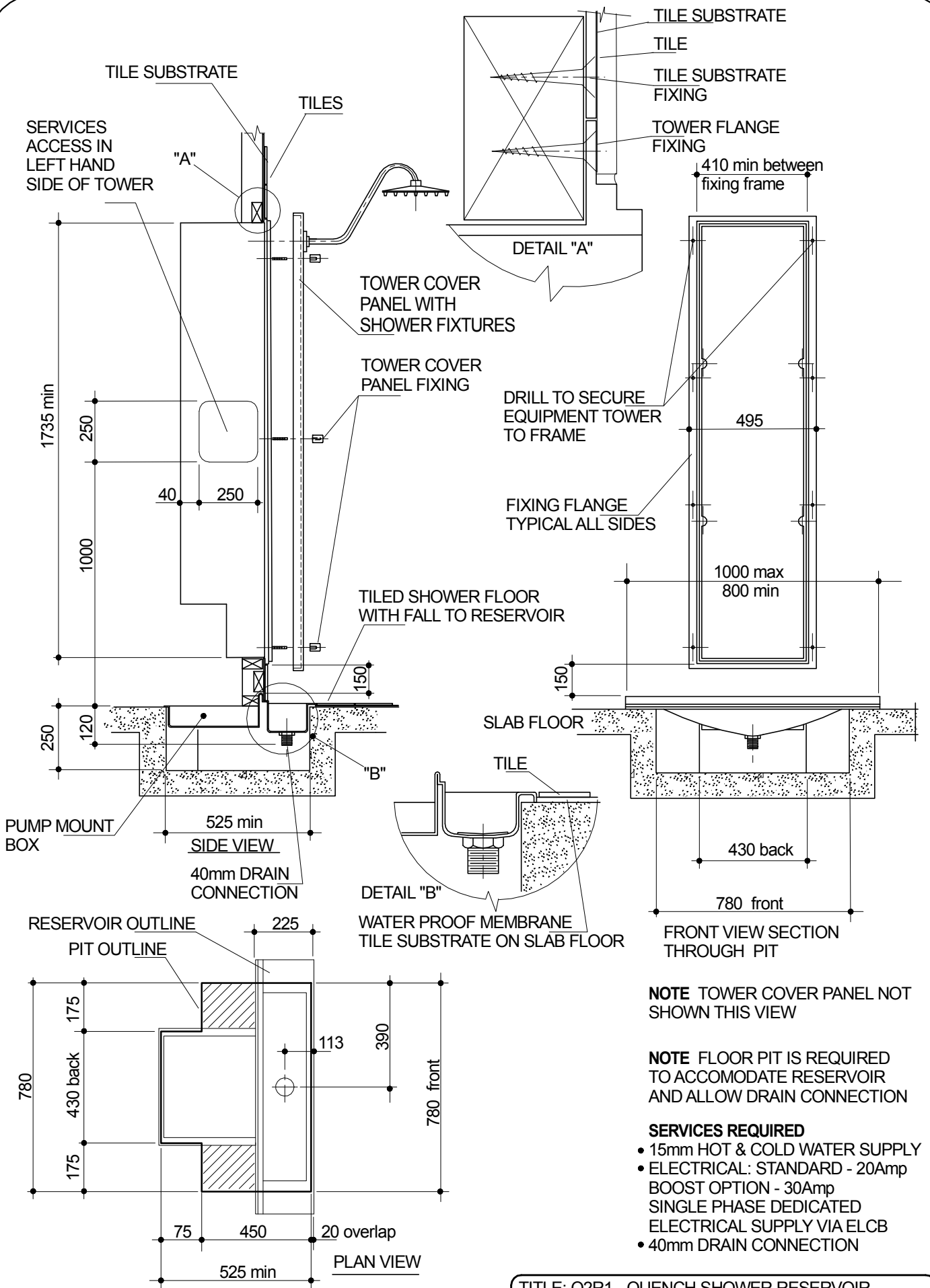


## Installation Overview - Reservoir

1. The Quench Shower reservoir is supplied in 2 pieces – a moulded shower reservoir and an equipment tower. The reservoir is available in varying size and colours. The equipment tower houses the Quench operating system - heater, plumbing and electronic control system. The tower's removable front cover panel has a smooth flat surface to accommodate tile, stainless steel, glass or alternative decorative finish that is to be added on-site.
2. The shower reservoir incorporates the re-circulating pump mounted within the pump box, the pump box is part of the reservoir. The pump box is to be recessed into the wall cavity of the building to line up with the equipment tower that is also to be recessed into the wall cavity. The pump box recesses into the wall cavity by 370mm and the equipment tower by 335mm
3. A floor pit is to be formed in the slab floor to accommodate the shower reservoir, pump box and to allow access to drain connection under shower reservoir.
4. The shower reservoir is to be located, secured and sat on an appropriate support bed. The pump box is to be recessed into the wall cavity by 335mm.
5. The shower reservoir may be reduced in width to suit shower enclosure size.
6. The shower floor is to be tiled up to the shower reservoir edge. An appropriate water proof substrate, tile, grout and sealer is to be used. The tiled floor must fall towards the reservoir.
7. The equipment tower is to be located and secured in place centre of the base directly above the pump box. A tile width (approx 180mm) between the shower reservoir and the equipment tower is to be allowed for. The shower walls are to be constructed around the shower reservoir and the equipment tower. The tile substrate, tile, grout and sealer is then to be applied.
8. The pump and the equipment tower are then to be connected – this is done by gaining access to the inside of the equipment tower by removing the equipment tower's front cover panel (4 screw caps), connection can then be made. Access to equipment is through the towers front cover panel inside the shower enclosure – access to equipment from behind the equipment tower is not required.
9. 15mm (1/2 inch) hot & cold water supply lines enter the equipment tower through a cut out window on the left hand side of the tower. Connection to the equipment tower is then made by qualified plumber in accordance with local and national plumbing regulations.
10. A 40mm (1 1/2inch) drain connection to shower reservoir is to be made by qualified plumber in accordance with local and national plumbing regulations.
11. A 20 Amp single phase dedicated electrical supply via an ELCB is to enter the equipment tower and be terminated inside the electrical box provided. All electrical work must be performed by a qualified electrician in accordance with local and national electrical regulations.

**Note:** A Boost option is available this requires a 30Amp electrical supply.

**Refer to Installation drawings and guide**



**NOTE** TOWER COVER PANEL NOT SHOWN THIS VIEW

**NOTE** FLOOR PIT IS REQUIRED TO ACCOMODATE RESERVOIR AND ALLOW DRAIN CONNECTION

- SERVICES REQUIRED**
- 15mm HOT & COLD WATER SUPPLY
  - ELECTRICAL: STANDARD - 20Amp BOOST OPTION - 30Amp SINGLE PHASE DEDICATED ELECTRICAL SUPPLY VIA ELCB
  - 40mm DRAIN CONNECTION

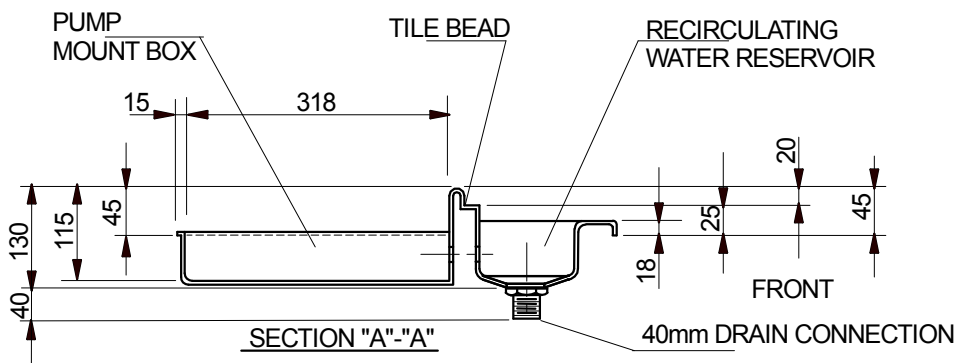
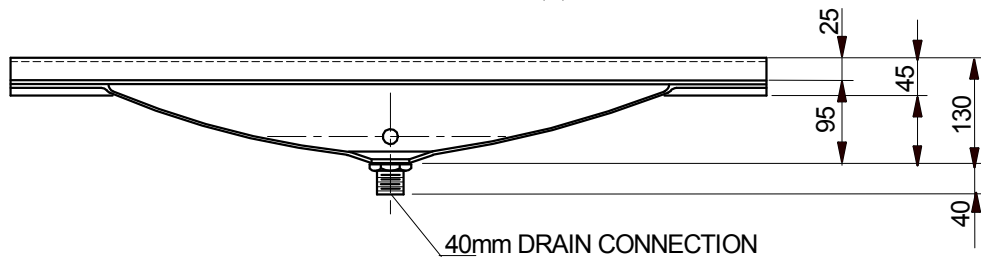
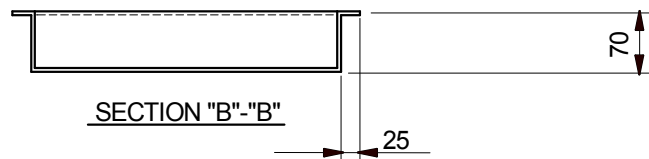
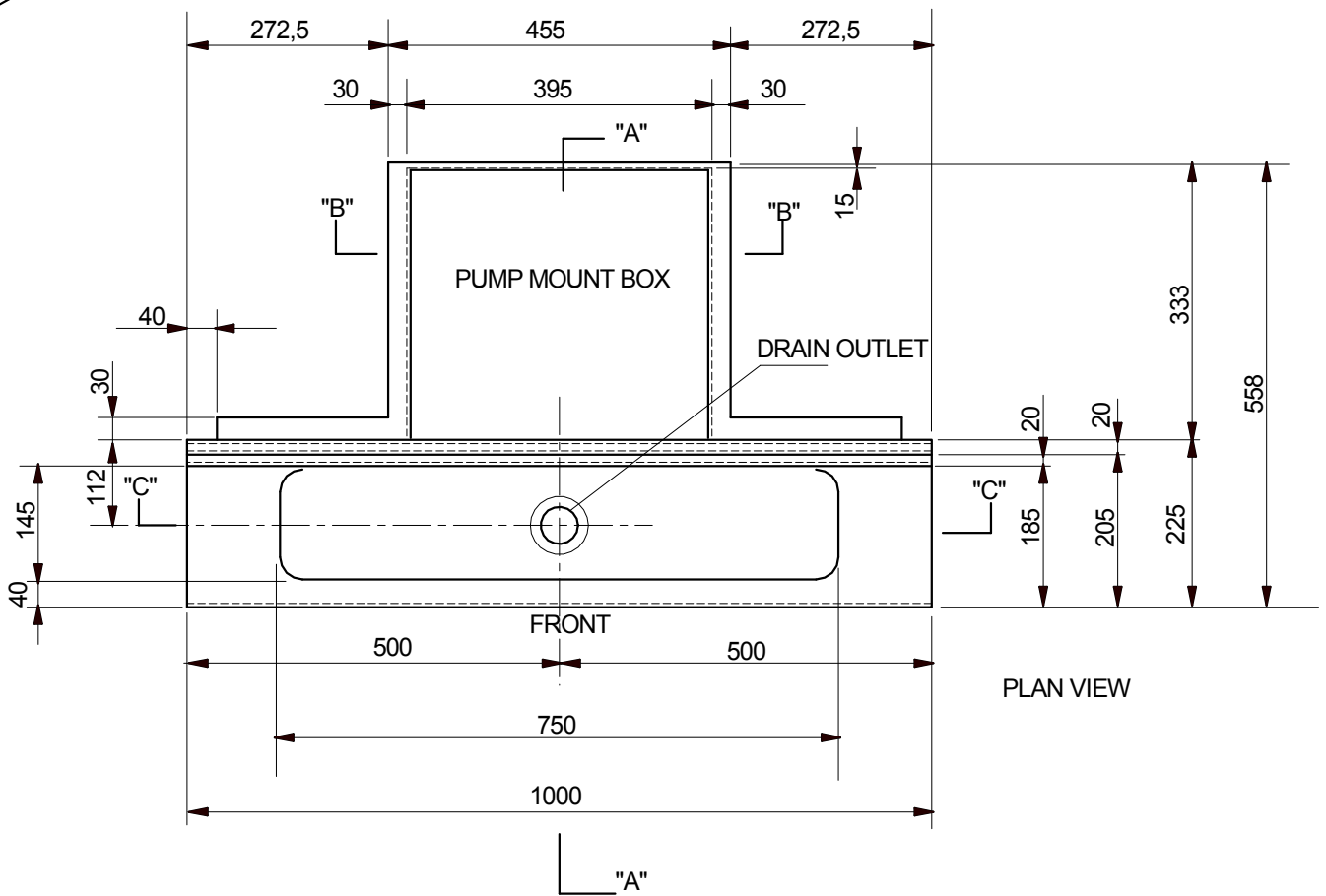
TITLE: Q2R1 - QUENCH SHOWER RESERVOIR AND TOWER INSTALLATION CONCRETE SLAB

DRAIN CONNECTION ACCESS AREA

**QUENCH SOLUTIONS PTY LTD**  
Melbourne Australia

ph: (03)9786 7887 www.quenchshowers.com

ALL DIMENSIONS IN MILLIMETERS  
SCALE: 1:20 DRG No. Q2R1-003 2of5



NOTE! RESERVOIR WIDTH MAY BE REDUCED IN SIZE FROM 1000mm TO 800mm TO SUIT REQUIREMENT

QUENCH SOLUTIONS PTY LTD

Melbourne Australia

ph: (03)9786 7887 www.quenchshowers.com

MATERIAL: MOULDED POLYESTER FIBREGLASS

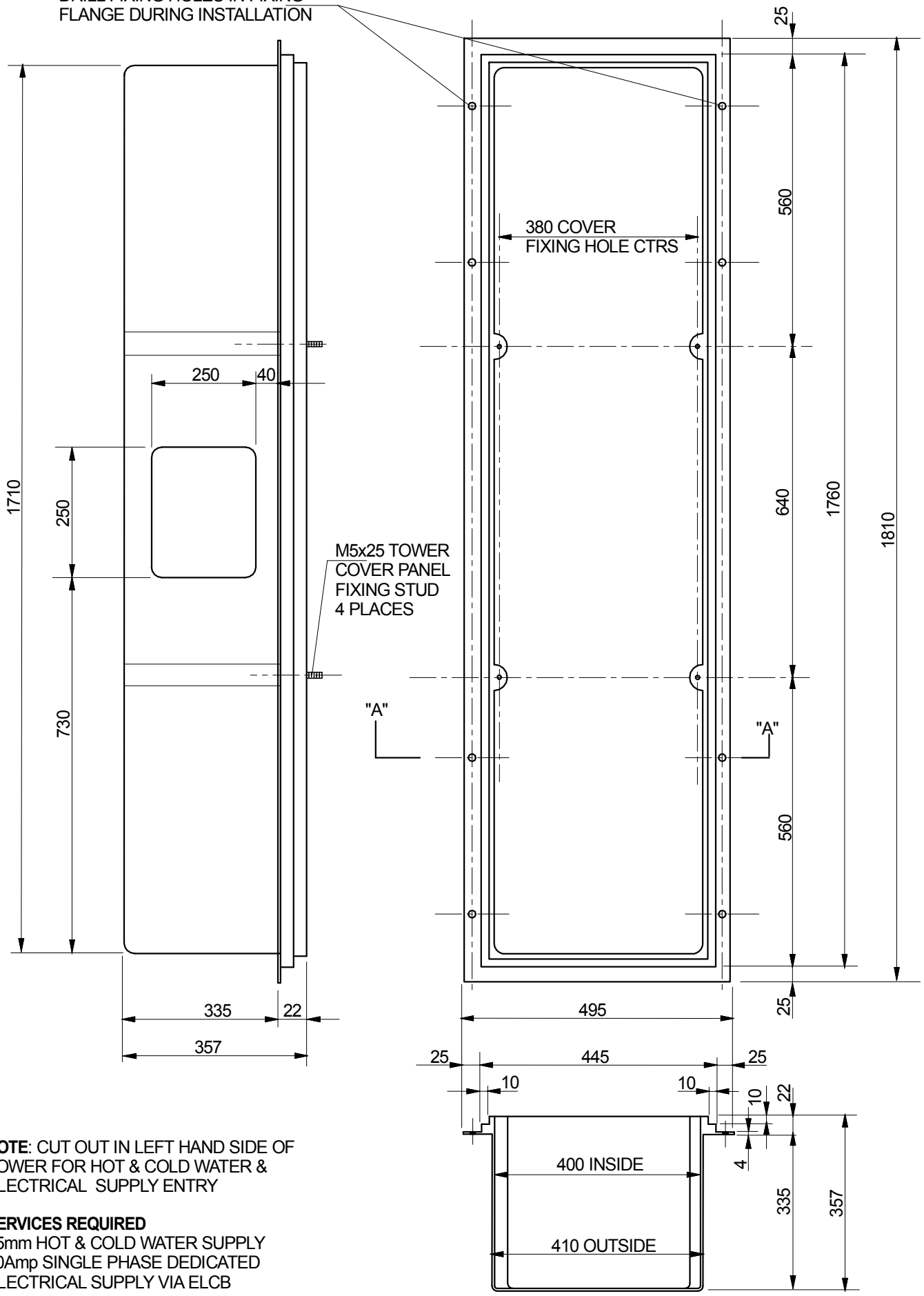
Scale: 1:50 DRG No. Q2R1-003 3of5

TITLE: Q2R1 SHOWER RESERVOIR

ALL DIMENSIONS IN MILLIMETERS

NOTE. THIS DRAWING IS TO BE USED AS A GUIDE ONLY AND IS SUBJECT TO CHANGE WITHOUT NOTICE

DRILL FIXING HOLES IN FIXING FLANGE DURING INSTALLATION



**NOTE:** CUT OUT IN LEFT HAND SIDE OF TOWER FOR HOT & COLD WATER & ELECTRICAL SUPPLY ENTRY

**SERVICES REQUIRED**

- 15mm HOT & COLD WATER SUPPLY
- 20Amp SINGLE PHASE DEDICATED ELECTRICAL SUPPLY VIA ELCB

SECTION "A"- "A"

TITLE: EQUIPMENT TOWER

**QUENCH SOLUTIONS PTY LTD**

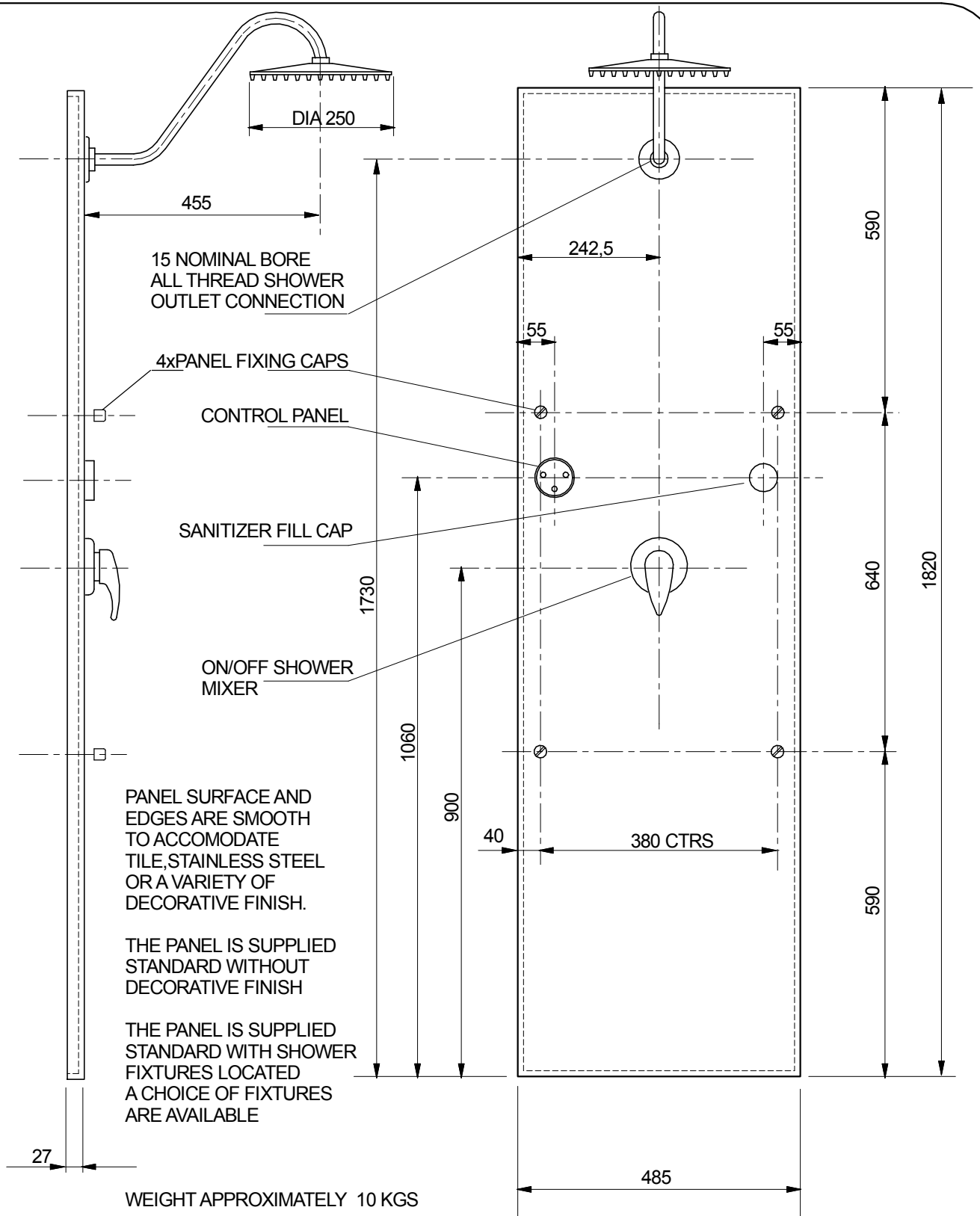
Melbourne Australia

ph: (03)9786 7887 www.quenchshowers.com

ALL DIMENSIONS IN MILLIMETERS

MATERIAL : MOULDED POLYESTER FIBREGLASS SCALE: 1:5 DRG No. Q2R1-003 4of5

NOTE. THIS DRAWING IS TO BE USED AS A GUIDE ONLY AND IS SUBJECT TO CHANGE WITHOUT NOTICE



**NOTE:** TOWER COVER PANEL FIXES TO EQUIPMENT TOWER AND SECURED IN PLACE BY (4) FOUR FIXING CAPS

A WATER SPRAY POLYMER PROTECTIVE SEAL IS COMPRESSED BETWEEN COVER PANEL AND TOWER.

TOWER COVER PANEL IS REMOVABLE FROM WITHIN THE SHOWER ALLOWING ACCESS TO EQUIPMENT LOCATED IN THE TOWER

TITLE: TOWER COVER PANEL

**QUENCH SOLUTIONS PTY LTD**

ALL DIMENSIONS IN MILLIMETERS

Melbourne Australia

ph: (03)9786 7887 www.quenchshowers.com

SCALE: 1:5

MATERIAL : MOULDED SANITARY GRADE POLYESTER (REINFORCED FIBREGLASS)

DRG No. Q2R1-004 5of5

NOTE. THIS DRAWING IS TO BE USED AS A GUIDE ONLY AND IS SUBJECT TO CHANGE WITHOUT NOTICE