

# A SHOWER THAT CAN USE 4 TIMES LESS WATER AND SAVE UP TO 87% ENERGY



**Quench**<sup>™</sup>  
SHOWERS

**SAVING WATER. SAVING ENERGY.**

International patent pending. Registered design.



OUR PLANET  
IS MADE  
UP OF  
AROUND  
75% WATER.  
97% IS IN  
OUR OCEANS,  
2% IN OUR  
ICE CAPS  
AND  
GLACIERS  
AND LESS  
THAN 1%  
IS FRESH AND  
AVAILABLE  
FOR HUMAN  
USE.



Complete Quench Shower Q1 system

## The driest continent on Earth

If we focus on Australia's water position we are at crisis point. Being aware of this is a start, but more importantly, we all need to understand the crisis and take immediate action if we are going to influence change.

Without changing the way we consume and manage our water usage in our day-to-day activity, this crisis will become a *widespread catastrophe!*

Our nation is in the midst of the driest periods on record. Our water storage dams are at an all time low, and according to research findings, Australian's consume more water per capita than any other nation in the world.

## The Quench Shower - an Australian design

The Quench® Shower is a totally new approach to showering. It is a re-circulating shower that can *save enormous amounts of water and energy* when compared to the conventional shower in your home. Quench has 2 design options:

**Q1 Model (standard )** - a complete moulded shower cubicle that consists of base and walls.

**Q2 Model** - Design your own shower around the unique Quench operating system, shower base and tower.

Quench is a high-performance, easy to operate, hygienic system that sets the standard well into the future. It's a way you can contribute actively and immediately to substantially reduce water usage in your home.



A fifth of the world's population has no access to drinking water. (UN)

IF WE FOCUS ON AUSTRALIA'S WATER POSITION, WE ARE INDEED AT CRISIS POINT AND SIMPLY BEING AWARE OF THIS IS NOT ENOUGH.



### **Changing the way we shower**

The bathroom is responsible for a high percentage of household water consumption and the shower plays a leading role. It is estimated that the average shower experience is around 7 minutes, and recent Government initiatives are encouraging a reduction of this time to 4 minutes.

### **Can we really sustain our water supplies?**

With the current water shortage crisis, and the worst droughts on record in the past 100 years, the desperate need for us to all reduce our water consumption is irrefutable. The way in which we use water must change significantly,

and immediately, in order to provide the necessary water reserves to sustain our current population, and the rapidly growing population trends experienced globally.

## The current facts

A majority of homes in Australia (estimated to be in excess of 70%), have 'pre-water saving' shower heads that are capable of flowing 20 litres per minute. Therefore a 7 minute shower could consume as much as 140 litres of water – that's equivalent to 14 large buckets of water.

If four people in the same home were to take a 7 minute shower, then around 560 litres of water could be easily consumed each day or 3,920 litres per week or 203,840 litres per year. When comparing this to a 'water saving' shower head that consumes around 10 litres per minute, the water consumption could be halved – a significant reduction!

## Why is it hard for us to change?

There is more to showering than simply 'washing'. A lot of time is spent in the shower enjoying the hydrotherapy experience well after the washing process has been completed.

The hot flowing water – with its unique splashing sound – is hard to compare with any other therapeutic experience that is 'so readily available' to us all.


## We must change and use less water

Quench is a revolutionary shower system that can **reduce water consumption by as much as 82%** when compared to the existing shower in your home. No matter what shower you have in your home, Quench has the potential to reduce your water consumption.

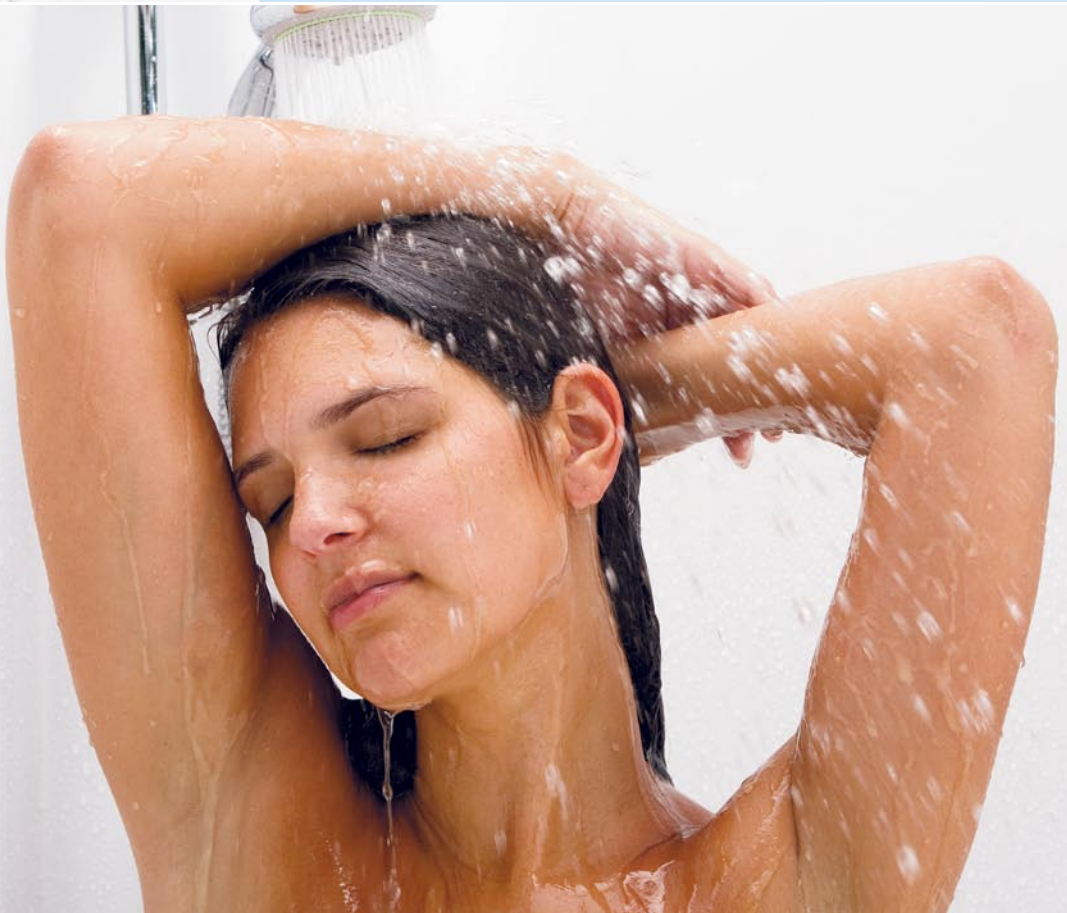


In 2025 two thirds of the world's population will suffer from a lack of water unless large-scale action is taken. (UNESCO/UNEP)

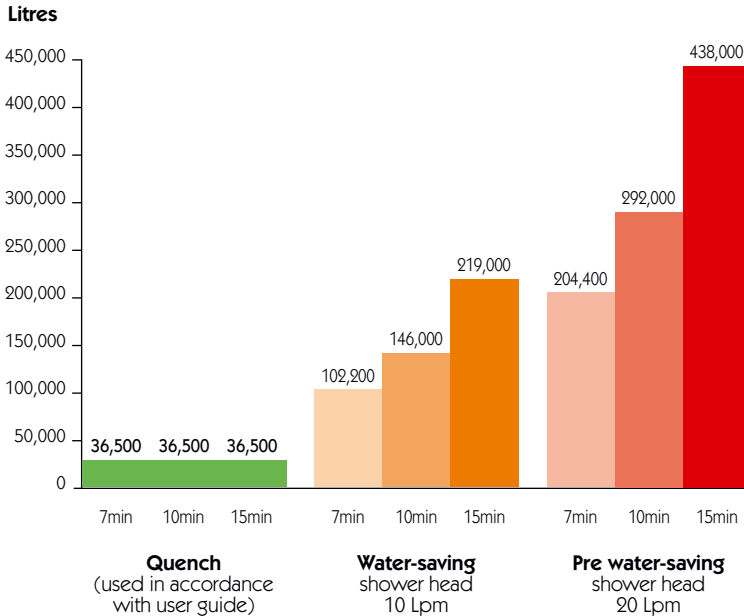




QUENCH PROVIDES YOU  
WITH AN INCREDIBLE  
SHOWERING EXPERIENCE  
– USING SIGNIFICANTLY  
LESS WATER AND ENERGY.



## Annual shower water used in the home



Above comparisons are approximate and based upon 4 persons each taking either a 7-minute, or a 10-minute, or a 15-minute shower per day over a twelve month period.

### The comparison

A 7 minute Quench Shower experience can consume *as little as 25 litres*, that's a **saving of 115 litres (82%) per shower** when compared to 'pre-water saving' shower heads, and a **saving of 45 litres (64%) per shower** when compared to 'water saving' shower heads.

With little change to your daily showering habit, these savings are incredible. Showering with Quench will encourage you to save enormous amounts of water and energy, and make a significant daily contribution to our environment.



Quench reservoir and control panel



A range of premium grade shower fittings and fixtures

Over a quarter of Australia's river systems are close to, or have exceeded, sustainable extraction limits. (ACF)



## Quench 2-Step showering

Quench 2-Step showering is simply the breaking up of the showering experience in such a way that results in enormous amounts of water saved.

### Step 1: Wash your body.

Enter the shower and immediately proceed with washing your body (in much the same way you always have). Focus on washing and rinsing your body efficiently – in a short period of time.

This could take as little time as 2 minutes and consume as little as 20 litres of water (2 minutes of actual water flow).

The Quench shower head flows at around 9 litres per minute.

### Step 2: Enjoy the shower experience.

It is this experience that keeps us under the shower for most of the time.

Allow fresh, clean temperature-controlled water to fill the Quench reservoir that is located in the base. Activate the Quench **Auto-Mode** and pre-heated water will continue to flow through the Quench Shower system for as long as you desire – *using as little as 4 litres of water!*

**That's it – around 4 litres enables you to shower as long as you want, enjoying a temperature controlled shower.**

BASED ON A 7 MINUTE  
CONVENTIONAL SHOWER, THE  
QUENCH SHOWER CAN SAVE  
OVER 100 LITRES OF WATER.



Normal showering

## Hygienic operation

Hygiene – especially in the bathroom – is a concern for us all. The Quench Shower is conveniently sanitized after each and every use.

### Following each shower and at the touch of a button:

1. The automatic Sanitize-Rinse cycle is activated
2. Sanitizer is flushed through the entire system
3. A fresh water 'rinse' immediately follows
4. The entire system, including the shower base, is effectively sanitized. All completed in approximately 1 minute.

**Quench is now in its original hygienic condition ready for the next shower.**



Auto-Mode

## Finally a design that looks great and is easy to clean

Quench's walls and base mouldings provide a smooth and 'easy to clean' low maintenance surface.

The Q1 and Q2 Models are designed to allow the greatest flexibility to suit any bathroom layout and style.

Installing just 1,000 Quench Showers could save as much as 200 million litres per year – equivalent to 80 Olympic size swimming pools.



Activate Auto-Mode



Close drain effortlessly



QUENCH TECHNOLOGY PROVIDES  
A CONSISTENTLY POWERFUL SHOWER,  
AND ENSURES YOUR CONTRIBUTION  
TO CONSERVATION.

## Constant water pressure

A general concern with water saving showers is "will the experience be satisfying and the shower pressure be strong enough?". With the development of 'water saving' shower heads, considerable advancement has been made in shower spray-pattern technology.

The Quench Shower system utilises this latest technology to *ensure optimum performance* by combining controlled water-pressure with water-flow. The Quench system is pressurised independently of the existing mains water pressure in your home. Quench has its own

dedicated pressure and flow system to ensure that the performance is constant throughout Quench's Auto-Mode operation.



## Advanced shower performance

Quench's performance will not be affected by the operation of another shower, the running of a tap or the flush of a toilet. So, if the existing water pressure in your home has compromised your shower experience, then allow Quench to take you to a *heightened level of showering*.

In addition to reliable constant pressurised shower flow, Quench's shower head also allows variable spray pattern selection from a heavy rain fall to a powerful point penetrating massage. Optional shower fixtures are also available. You will not be disappointed with a Quench Shower.

Australia is one of the highest users of water per capita in the world, despite being the driest inhabited continent. (CSIRO)



## Design

The Quench Shower has been designed to provide a high level of modernity to any bathroom. Clean stylish fittings and smooth surfaces result in Quench being an enviable piece of bathroom furniture. The Quench design enables straight forward uncomplicated installation. Only basic plumbing and electrical services are required - similar to that of a spa-bath installation.

The Quench Shower is supplied as a complete shower cubicle system including all shower fixtures. Alternatively, the Quench system can be supplied in a range of options allowing you to create your own shower surround incorporating tile, glass etc.

## Affordability

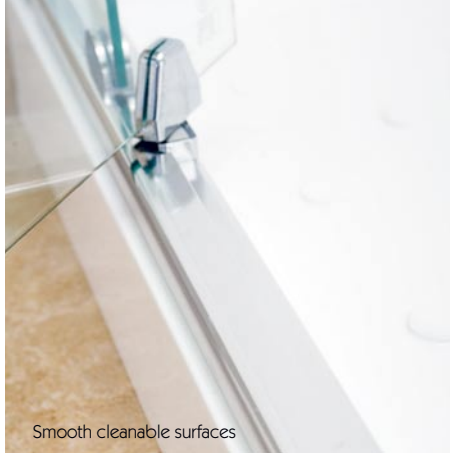
Once the full cost of installing a conventional shower has been calculated, you will be surprised how affordable installing a Quench Shower really is. In fact, the difference could be *less than 50 cents per day* when amortized over an average home loan, and as the cost of water increases, and it will, the difference may become negligible.

## The environment

The Quench Shower can save enormous amounts of water and energy when compared to conventional shower operation. Quench may **save up to 82% water and 87% energy consumption** when operating in Auto-Mode.\* (Refer to energy saving table.)

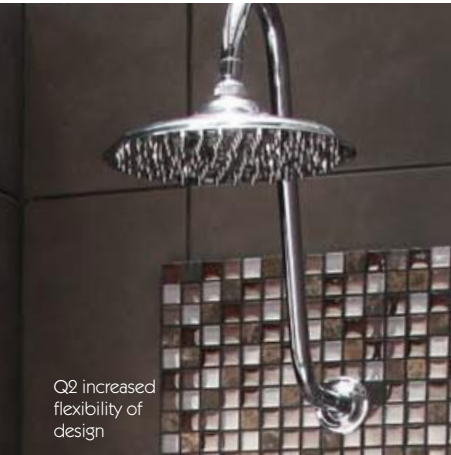
\* The potential energy saving stated is believed to be achievable but cannot be guaranteed due to varying conditions.

QUENCH 'WATERTIGHT' FUND  
ENCOURAGES DEVELOPMENT  
OF PRODUCTS, TECHNOLOGY  
AND SERVICES TO OVERCOME  
THE GLOBAL WATER CRISIS.



Smooth cleanable surfaces

Throughout the world,  
21 countries suffer from  
a lack of water. (FAO)



Q2 increased  
flexibility of  
design

### **Saving energy - up to 87%**

Saving energy is a necessity, and therefore the time spent in any shower should be responsibly monitored. You should also consider switching to a renewable energy source. Quench Solutions Pty Ltd – responsible for designing and producing Quench Showers – have taken an active role in the development of solutions to relieve the water crisis being experienced right now. Without significant change to our daily activity, and the way we manage our water consumption, our water position may soon become much more than just a crisis – it could quite easily become a catastrophe!

The general public have to do more than simply acknowledge that there is a problem. They must educate themselves to understand the problem and act now before it is too late.

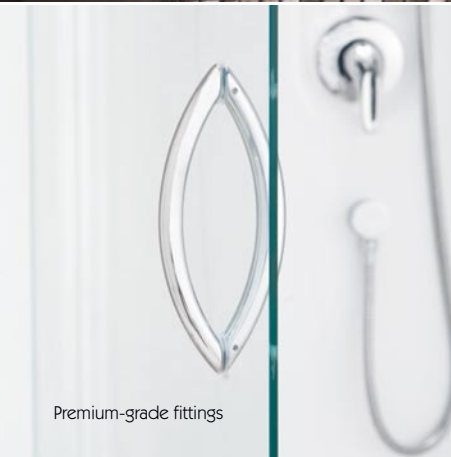
### **Quench 'Watertight' Fund®**

The Quench Shower is one solution to a problem, but it is not the only solution. We hope that our contribution will stimulate ideas and encourage people to develop concepts and products that can benefit our planet – it is the only one we have.

#### **There is no substitute for water.**

You cannot manufacture it, nor grow it and when in short supply, its true value will be recognized.

Quench Solutions Pty Ltd will make a donation from the sale of every Quench system to the Quench 'Watertight' Fund, a not-for-profit organization. These funds will be used to develop new products, technology and services to overcome the water crisis being experienced globally. Visit [www.quenchwatertightfund.com](http://www.quenchwatertightfund.com) to find out more or make a donation.



Premium-grade fittings

NO MATTER WHAT SHOWER YOU HAVE  
IN YOUR HOME, A QUENCH SHOWER CAN  
REDUCE YOUR WATER CONSUMPTION  
BY AS MUCH AS 82% – A WORLD FIRST.



### **Design options**

A range of options designed to enhance your Quench showering experience are available.

#### **Q Color**

White (Standard). A full range of custom colors are available including Black, Gold and Pearl Shimmer. A color match service is also available.

Shower fixtures are available in chrome or gold finish.

#### **Q Light**

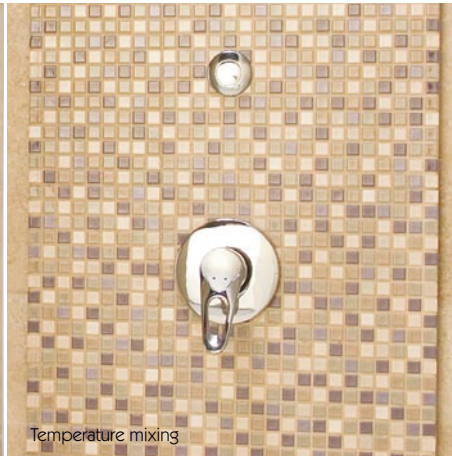
Set the mood by selecting the color that relaxes you best. Choose from the cool Blue, Green, Purple, White or Yellow light range. The Q Light system will light up your entire bathroom.



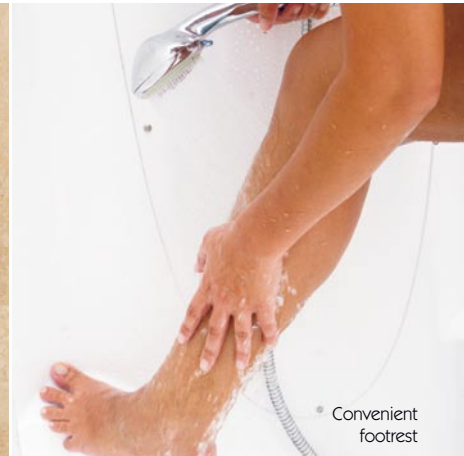
Worldwide fresh water consumption multiplied by 6 during the 20th century, while the population tripled during the same period. (UNEP)



Q Pump operation



Temperature mixing



Convenient footrest

### Q Pump

**'Can save additional water and energy'.**

No longer will you have to wait for the hot water to come through! Think how much water is wasted while you're waiting for hot water to come through your shower.

### Q Dome

With a Q Dome enclosure – a hot steamy environment is created by the hot shower – similar to that of a steam room. The Q Dome will accelerate and retain the warmth within the Quench Shower cubicle.

### Q Grey water system

A way to re-use the shower water in your garden. Connects to the Quench Shower and makes use of water that would otherwise go down the drain.



[www.quenchshowers.com](http://www.quenchshowers.com)

# Quench<sup>™</sup> SHOWERS

**Quench Solutions Pty Ltd**  
PO Box 41, Patterson Lakes  
Victoria, Australia 3197  
ABN 29 122 352 809

**T: (03) 9786 7887**

**[info@quenchshowers.com](mailto:info@quenchshowers.com)**  
[www.quenchshowers.com](http://www.quenchshowers.com)

## **Warranty**

5 year limited warranty.  
See website for conditions or  
request the manufacturers  
warranty statement by calling  
Quench Solutions Pty Ltd.

## **References**

UN: United Nations  
UNESCO: United Nations Education,  
Scientific and Cultural Organisation  
UNEP: United Nations  
Environment Programme  
ACF: Australian Conservation Foundation  
CSIRO: Australian Commonwealth  
and Scientific Research Organisation  
FAO: Food and Agriculture Organisation

Quench Showers<sup>®</sup> is a trademark of Quench  
Solutions Pty Ltd. In accordance with our policy  
of continued improvement, we reserve the right  
to amend specification without prior notice.

**SAVING WATER. SAVING ENERGY.**